



BAIF-CSR CONNECT



BAIF DEVELOPMENT RESEARCH FOUNDATION

BAIF has been recognised by the Ministry of Finance, Government of India u/s 35 (1) (ii) of the IT Act, 1961 for Scientific Research. Contributions made to BAIF for carrying out Research and Development activities will be eligible for exemption from Income Tax.

BAIF has also been recognised as Center of Excellence by Ministry of Tribal Affairs, Government of India

Mission and Vision

BAIF was founded by Dr. Manibhai Desai, in 1967 with a vision of building a self-reliant rural society assured of food security, safe drinking water, good health, gender equity, low child mortality, literacy, high moral values and clean environment. BAIF's Mission is to create opportunities of gainful self-employment for the rural families, especially disadvantaged sections, ensuring sustainable livelihood, enriched environment, improved quality of life and good human values.

This is being achieved through development research, effective use of local resources, extension of appropriate technologies and upgradation of skills and capabilities with community participation. BAIF is an apolitical, secular and professionally managed organisation.

Program Implementation Approach



Geographic Presence



1000,000 Villages



5 Million Families

51 Aspirational Districts

Overview of Programs



Livelihood Enhancement

- Land based livelihood development, including Wadi (Argo-Horti-Forestry Model)
- Integrated Livestock Development
- Skill Development and Entrepreneurship Development



Natural Resource Management

- Water Resource Management and Watershed Development
- Soil Fertility Improvement
- Silviculture Development
- Climate Change Adaptation and Mitigation



Improve in Quality of Life

- Community Health
- Enrichment of School Education
- Drudgery Reduction



Emerging and Cross Cutting Themes

- Women Empowerment and Women Centric Livelihoods
- Clean and Renewable Energy and Bio Energy
- Appropriate Technology Application
- E-Learning and Information, Communication and Technology based interventions



Holistic Village Development

- An integrated village/cluster centric approach, focused towards developing local resources, increase economic growth opportunities and support overall socio-economic development

Impact and Sustainability

Critical Elements



Action Research



Impacting Families



Optimum Utilisation of
Local Resources



Knowledge Partnership
with Government



Direct
Implementation

Outreach and Impact



Integrated Livestock Development

- 80307 Villages.
- 309 Districts.
- 4211 Centers.
- 4 million families.
- 36,412 goat keepers.
- 4000 elite bucks.



Natural Resource Development

- 1295 villages.
- 756 Watersheds.
- 356,463 ha treated.
- 2.58 million Families.
- Doubled cropping area and productivity.



Improved and Climate SMART Agriculture

- 6483 villages.
- 2.11 million families.
- 83000 Ha of degraded land developed.
- New crops and climate smart agriculture.



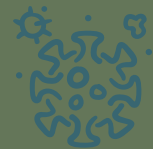
Improve Quality of Life

- 2478 SHG Groups.
- 41454 members.
- Better Quality of Life and Social Security.



Member of the "4 per 1000" initiative.

- 1000" initiative.
- Climate proofing.
- low/no carbon, water footprint.



Rapid Response and Relief

- Provided immediate support in 654 villages.
- Building communities resilience across locations.

Impact Standpoints



Secured and Diversified Livelihoods, reduced distressed migration



Minimised Emissions and Reduced Carbon and Water Footprint



Food security, clean water and sanitation access and stronger women's agency

Positively Impacted Sustainable Development Goals



OUR PARTNERS

OUR PARTNERS



GOVERNMENT PARTNERS

Partner of Central and State Government Ministries and Departments. Resource Support Organization with NABARD, MSRLM, SERP and other Government agencies.



CORPORATE PARTNERS

Partnership with 60+ Corporates, Implementing over 130 projects Pan India.



INTERNATIONAL ORGANISATIONS

Association with International and National Research Institutions and philanthropic agencies

MOVING FORWARD

Establish Long term partnerships with BAIF catalyzing significant change at grassroots level, improving life and livelihoods of rural poor communities and supporting sustainable development, across India in most marginalised and underserved geographies.

GET IN TOUCH: ● +91-20-25231661-9

● baif@baif.org.in

● <https://baif.org.in>









AWARDS AND RECOGNITIONS

Best implementing partner award received for the Samruddha Kisan Project sponsored by Mahindra and Mahindra subsequently two times in 2016 and 2017



BAIF Development Research Foundation

BAIF Bhavan, Dr. Manibhai Desai Nagar, Warje, Pune 411058, Maharashtra India

Phone: +91-20-25231661-9 Mobile: +91-9075002912-5 E-mail: baif@baif.org.in Website: www.baif.org.in